

Customer: **Dreamwave**  
 Customer Sample ID: **1g Vape Cart - Watermelon OG**  
 Laboratory Number: **30L0181-01**



# Cannabinoid Profile

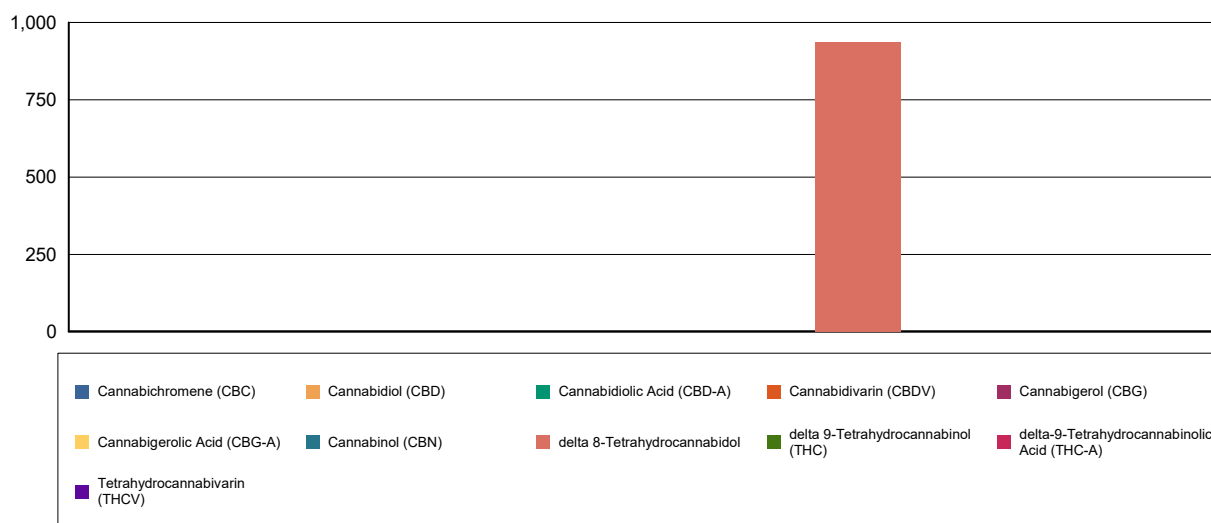
Extraction Technician: DF  
 Analytical Chemist: SH

Extraction Date(s)	Analysis Date(s)
2/12/2021	2/12/2021

Cannabinoids (HPLC)		Results	
	LOD (mg/g)	%	mg/g
Cannabidiol (CBD)	<0.80		
Cannabidiolic Acid (CBD-A)	<0.80		
Cannabigerolic Acid (CBG-A)	<0.80		
Cannabigerol (CBG)	<0.80		
Tetrahydrocannabivarin (THCV)	<0.80		
Cannabinol (CBN)	<0.80		
delta 9-Tetrahydrocannabinol (THC)	<0.80		
delta 8-Tetrahydrocannabinol		92.72	927
Cannabichromene (CBC)	<0.80		
delta-9-Tetrahydrocannabinolic Acid (THC-A)	<0.80		
<b>Cannabinoids Total</b>		<b>%</b>	<b>mg/g</b>
Max Active THC		0.00	0.00
Max Active CBD		0.00	0.00
T.Active Cannabinoids		0.00	0.00
Total Cannabinoids		92.70	927.00

Following USDA guidelines on uncertainty, Altitude Consulting's uncertainty are calculated for CBDa and CBD at +/- 4%. The uncertainty for THCa and THC are +/- 5%. This implies the range for a 10% value of CBD to be 9.6-10.4%. The uncertainty range for a 0.30% value of THC would be 0.28-0.32%. The measurement uncertainty is calculated using a coverage factor of 2.

## Cannabinoid (mg/g)



Reporting Limits will vary based on sample extraction weight used for the analysis.

Altitude Consulting, LLC utilizes NIST traceable Reference Standards and Certified Reference Material to calibrate analytical instruments along with proven analytical methods. The methods are applied in the most ethical manner following good laboratory practice guidelines. The results of this report are based solely on the sample submitted and cannot be reproduced.



Customer: **Dreamwave**  
 Customer Sample ID: **1g Vape Cart - Lemonade**  
 Laboratory Number: **30L0181-02**



# Cannabinoid Profile

Extraction Technician: DF  
 Analytical Chemist: SH

Extraction Date(s)	Analysis Date(s)
2/12/2021	2/12/2021

Cannabinoids (HPLC)		Results	
	LOD (mg/g)	%	mg/g
Cannabidiol (CBD)	<0.60		
Cannabidiolic Acid (CBD-A)	<0.60		
Cannabigerolic Acid (CBG-A)	<0.60		
Cannabigerol (CBG)	<0.60		
Tetrahydrocannabivarin (THCV)	<0.60		
Cannabinol (CBN)	<0.60		
delta 9-Tetrahydrocannabinol (THC)	<0.60		
delta 8-Tetrahydrocannabinol		93.50	935
Cannabichromene (CBC)	<0.60		
delta-9-Tetrahydrocannabinolic Acid (THC-A)	<0.60		
Cannabinoids Total		%	mg/g
Max Active THC		0.00	0.00
Max Active CBD		0.00	0.00
T.Active Cannabinoids		0.00	0.00
Total Cannabinoids		93.50	935.00

Following USDA guidelines on uncertainty, Altitude Consulting's uncertainty are calculated for CBDa and CBD at +/- 4%. The uncertainty for THCa and THC are +/- 5%. This implies the range for a 10% value of CBD to be 9.6-10.4%. The uncertainty range for a 0.30% value of THC would be 0.28-0.32%. The measurement uncertainty is calculated using a coverage factor of 2.

## Cannabinoid (mg/g)



<span style="color: blue;">■</span> Cannabichromene (CBC)	<span style="color: orange;">■</span> Cannabidiol (CBD)	<span style="color: green;">■</span> Cannabidiolic Acid (CBD-A)	<span style="color: red;">■</span> Cannabidiol (CBDV)	<span style="color: purple;">■</span> Cannabigerol (CBG)
<span style="color: yellow;">■</span> Cannabigerolic Acid (CBG-A)	<span style="color: teal;">■</span> Cannabinol (CBN)	<span style="color: brown;">■</span> delta 8-Tetrahydrocannabinol	<span style="color: darkgreen;">■</span> delta 9-Tetrahydrocannabinol (THC)	<span style="color: pink;">■</span> delta-9-Tetrahydrocannabinolic Acid (THC-A)
<span style="color: purple;">■</span> Tetrahydrocannabivarin (THCV)				

Reporting Limits will vary based on sample extraction weight used for the analysis.

Altitude Consulting, LLC utilizes NIST traceable Reference Standards and Certified Reference Material to calibrate analytical instruments along with proven analytical methods. The methods are applied in the most ethical manner following good laboratory practice guidelines. The results of this report are based solely on the sample submitted and cannot be reproduced.



Customer:

Dreamwave

Customer Sample ID:

1g Vape Cart - Purple Punch

Laboratory Number:

30L0181-03



# Cannabinoid Profile

Extraction Technician: DF  
Analytical Chemist: SH

Extraction Date(s)	Analysis Date(s)
2/12/2021	2/12/2021

Cannabinoids (HPLC)		Results	
	LOD (mg/g)	%	mg/g
Cannabidiarin (CBDV)	<0.60		
Cannabidiolic Acid (CBD-A)	<0.60		
Cannabigerolic Acid (CBG-A)	<0.60		
Cannabigerol (CBG)	<0.60		
Cannabidiol (CBD)	<0.60		
Tetrahydrocannabivarin (THCV)	<0.60		
Cannabinol (CBN)	<0.60		
delta 9-Tetrahydrocannabinol (THC)	<0.60		
delta 8-Tetrahydrocannabidol		92.28	923
Cannabichromene (CBC)	<0.60		
delta-9-Tetrahydrocannabinolic Acid (THC-A)	<0.60		
Cannabinoids Total		%	mg/g
Max Active THC		0.00	0.00
Max Active CBD		0.00	0.00
T.Active Cannabinoids		0.00	0.00
Total Cannabinoids		92.30	923.00

Following USDA guidelines on uncertainty, Altitude Consulting's uncertainty are calculated for CBDa and CBD at +/- 4%. The uncertainty for THCa and THC are +/- 5%. This implies the range for a 10% value of CBD to be 9.6-10.4%. The uncertainty range for a 0.30% value of THC would be 0.28-0.32%. The measurement uncertainty is calculated using a coverage factor of 2.

## Cannabinoid (mg/g)



<span style="color:blue">■</span> Cannabichromene (CBC)	<span style="color:orange">■</span> Cannabidiol (CBD)	<span style="color:green">■</span> Cannabidiolic Acid (CBD-A)	<span style="color:red">■</span> Cannabidiarin (CBDV)	<span style="color:purple">■</span> Cannabigerol (CBG)
<span style="color:yellow">■</span> Cannabigerolic Acid (CBG-A)	<span style="color:teal">■</span> Cannabinol (CBN)	<span style="color:lightcoral">■</span> delta 8-Tetrahydrocannabidol	<span style="color:darkgreen">■</span> delta 9-Tetrahydrocannabinol (THC)	<span style="color:darkred">■</span> delta-9-Tetrahydrocannabinolic Acid (THC-A)
<span style="color:purple">■</span> Tetrahydrocannabivarin (THCV)				

Reporting Limits will vary based on sample extraction weight used for the analysis.

Altitude Consulting, LLC utilizes NIST traceable Reference Standards and Certified Reference Material to calibrate analytical instruments along with proven analytical methods. The methods are applied in the most ethical manner following good laboratory practice guidelines. The results of this report are based solely on the sample submitted and cannot be reproduced.



Customer: Dreamwave  
 Customer Sample ID: 1g Vape Cart - Banana Runtz  
 Laboratory Number: 30L0181-04



# Cannabinoid Profile

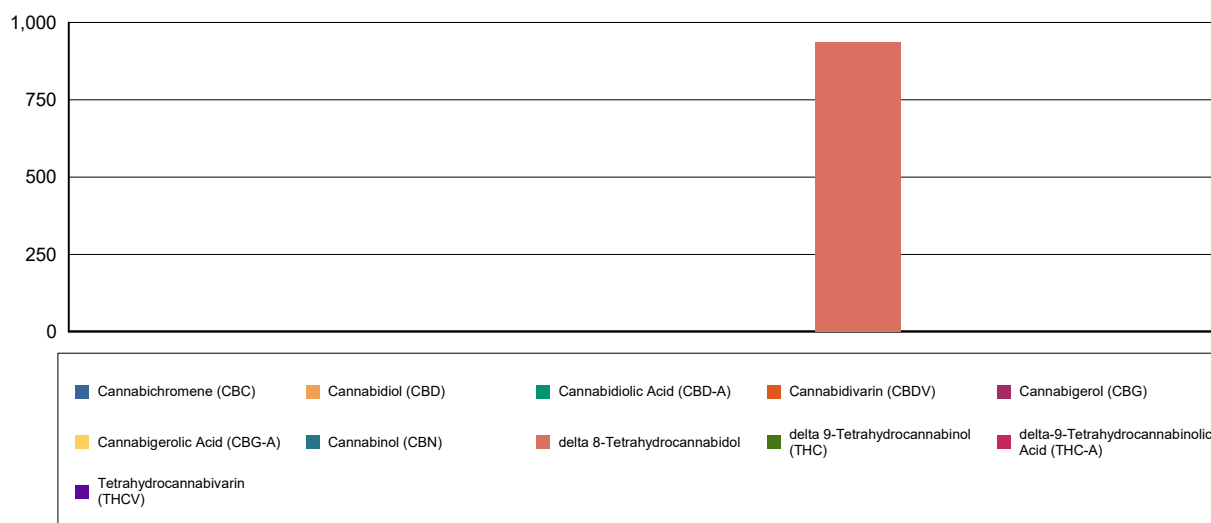
Extraction Technician: DF  
 Analytical Chemist: SH

Extraction Date(s)	Analysis Date(s)
2/12/2021	2/12/2021

Cannabinoids (HPLC)		Results	
	LOD (mg/g)	%	mg/g
Cannabidiarin (CBDV)	<0.80		
Cannabidiolic Acid (CBD-A)	<0.80		
Cannabigerolic Acid (CBG-A)	<0.80		
Cannabigerol (CBG)	<0.80		
Cannabidiol (CBD)	<0.80		
Tetrahydrocannabivarin (THCV)	<0.80		
Cannabinol (CBN)	<0.80		
delta 9-Tetrahydrocannabinol (THC)	<0.80		
delta 8-Tetrahydrocannabidol		93.09	931
Cannabichromene (CBC)	<0.80		
delta-9-Tetrahydrocannabinolic Acid (THC-A)	<0.80		
Cannabinoids Total		%	mg/g
Max Active THC		0.00	0.00
Max Active CBD		0.00	0.00
T.Active Cannabinoids		0.00	0.00
Total Cannabinoids		93.10	931.00

Following USDA guidelines on uncertainty, Altitude Consulting's uncertainty are calculated for CBDa and CBD at +/- 4%. The uncertainty for THCa and THC are +/- 5%. This implies the range for a 10% value of CBD to be 9.6-10.4%. The uncertainty range for a 0.30% value of THC would be 0.28-0.32%. The measurement uncertainty is calculated using a coverage factor of 2.

## Cannabinoid (mg/g)



Reporting Limits will vary based on sample extraction weight used for the analysis.

Altitude Consulting, LLC utilizes NIST traceable Reference Standards and Certified Reference Material to calibrate analytical instruments along with proven analytical methods. The methods are applied in the most ethical manner following good laboratory practice guidelines. The results of this report are based solely on the sample submitted and cannot be reproduced.